

Trade the Trash – Equivalent Fractions – Set 1

Materials needed:

- Game Cards

The object of the game is to collect matching pairs of cards with equivalent fractions – for example: $\frac{1}{2}$ and $\frac{2}{4}$. The first player to make 4 pairs is the winner.

Make sure each card has a match. Shuffle the Trade the Trash cards thoroughly. Place them in a stack face down where all players can reach them. This is the draw stack.

Players take turns either drawing or trading cards, and making pairs. You can do 1 of these two things when it is your turn – but not both.

- Draw – Player takes the top card from the draw stack and makes any possible pair with the cards they already have. If the player draws a “Trade the Trash” card, they can save that to use at a later time.
- Trade – if a player has a “Trade the Trash” card, they can use their turn to trade a card they don’t need for a card they do need from another player. (The other player does not have a choice in the matter.) Place used “Trade the Trash” cards in a pile next to the Draw pile.

Once a pair is made, those cards are protected and cannot be traded. **First player to make 4 pairs wins.**

Players must display all the cards they have available for trading so everyone can see them. If a player has more than one “Trade the Trash” card they can trade extras for other cards they need.

Hint: Reduce the fraction as soon as you get it to make it easier to find equivalents

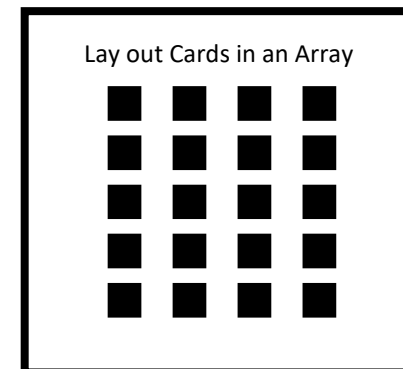
Matching/Concentration

Materials needed: 10 sets of matching cards (20 cards in all)

Lay the cards out in a 4 X 5 array (See picture to the right). Face up for matching, face down for concentration.

For matching – Lay the cards face up. Players take turns finding two cards that match.

For concentration – Lay the cards face down. Players take turns turning over cards to find two cards that match. If the cards “match” then the player keeps the two cards and tries again. If they do not match, the player turns them back over, and it is the next player’s turn.



$$\frac{1}{2}$$

4.3.C–4.3.D– Comp FR with Diff Num & Den – TTT- Set 1

$$\frac{2}{4}$$

4.3.C–4.3.D– Comp FR with Diff Num & Den – TTT- Set 1

$$\frac{1}{5}$$

4.3.C–4.3.D– Comp FR with Diff Num & Den – TTT- Set 1

$$\frac{1}{3}$$

4.3.C–4.3.D– Comp FR with Diff Num & Den – TTT- Set 1

$$\frac{2}{6}$$

4.3.C–4.3.D– Comp FR with Diff Num & Den – TTT- Set 1

$$\frac{2}{10}$$

4.3.C–4.3.D– Comp FR with Diff Num & Den – TTT- Set 1

$$\frac{1}{4}$$

4.3.C–4.3.D– Comp FR with Diff Num & Den – TTT- Set 1

$$\frac{2}{8}$$

4.3.C–4.3.D– Comp FR with Diff Num & Den – TTT- Set 1

$$\frac{3}{4}$$

4.3.C–4.3.D– Comp FR with Diff Num & Den – TTT- Set 1

$$\frac{1}{6}$$

4.3.C–4.3.D– Comp FR with Diff Num & Den – TTT- Set 1

$$\frac{2}{12}$$

4.3.C–4.3.D– Comp FR with Diff Num & Den – TTT- Set 1

$$\frac{1}{9}$$

4.3.C–4.3.D– Comp FR with Diff Num & Den – TTT- Set 1

$$\frac{1}{7}$$

4.3.C–4.3.D– Comp FR with Diff Num & Den – TTT- Set 1

$$\frac{2}{14}$$

4.3.C–4.3.D– Comp FR with Diff Num & Den – TTT- Set 1

$$\frac{2}{18}$$

4.3.C–4.3.D– Comp FR with Diff Num & Den – TTT- Set 1

$$\frac{1}{8}$$

4.3.C–4.3.D– Comp FR with Diff Num & Den – TTT- Set 1

$$\frac{2}{16}$$

4.3.C–4.3.D– Comp FR with Diff Num & Den – TTT- Set 1

$$\frac{6}{8}$$

4.3.C–4.3.D– Comp FR with Diff Num & Den – TTT- Set 1

$$\frac{1}{12}$$

4.3.C–4.3.D– Comp FR with Diff Num & Den – TTT- Set 1

$$\frac{2}{24}$$

4.3.C–4.3.D– Comp FR with Diff Num & Den – TTT- Set 1

$$\frac{1}{2}$$

4.3.C–4.3.D– Comp FR with Diff Num & Den – TTT- Set 1

$$\frac{2}{3}$$

4.3.C–4.3.D– Comp FR with Diff Num & Den – TTT- Set 1

$$\frac{4}{6}$$

4.3.C–4.3.D– Comp FR with Diff Num & Den – TTT- Set 1

$$\frac{4}{8}$$

4.3.C–4.3.D– Comp FR with Diff Num & Den – TTT- Set 1

$$\frac{2}{5}$$

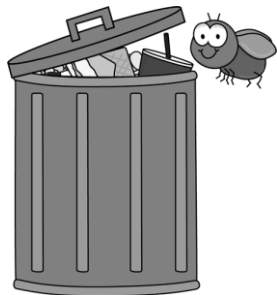
4.3.C–4.3.D– Comp FR with Diff Num & Den – TTT- Set 1

$$\frac{4}{10}$$

4.3.C–4.3.D– Comp FR with Diff Num & Den – TTT- Set 1

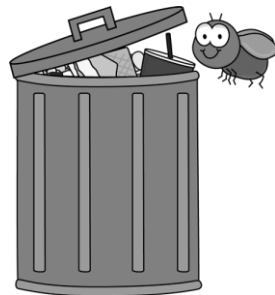
$$\frac{1}{3}$$

4.3.C–4.3.D– Comp FR with Diff Num & Den – TTT- Set 1



Trade that Trash!

4.3.C – 4.3.D – Comp FR with Diff Num & Den – TTT- Set 1

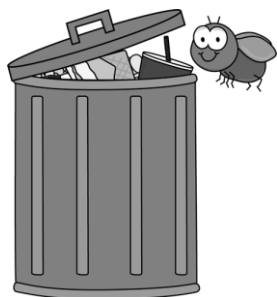


Trade that Trash!

4.3.C – 4.3.D – Comp FR with Diff Num & Den – TTT- Set 1

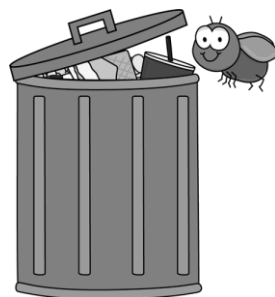
$$\frac{4}{12}$$

4.3.C – 4.3.D – Comp FR with Diff Num & Den – TTT- Set 1



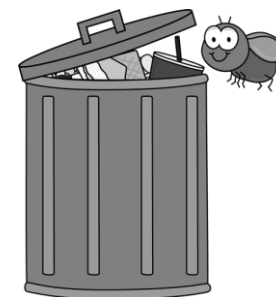
Trade that Trash!

4.3.C – 4.3.D – Comp FR with Diff Num & Den – TTT- Set 1



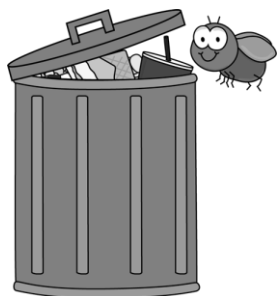
Trade that Trash!

4.3.C – 4.3.D – Comp FR with Diff Num & Den – TTT- Set 1



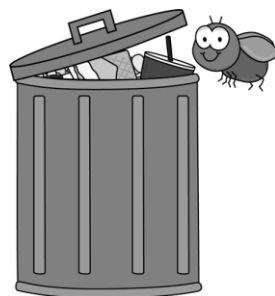
Trade that Trash!

4.3.C – 4.3.D – Comp FR with Diff Num & Den – TTT- Set 1



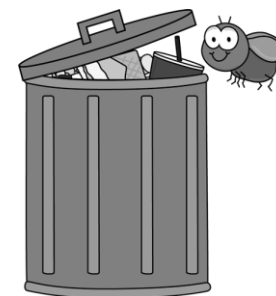
Trade that Trash!

4.3.C – 4.3.D – Comp FR with Diff Num & Den – TTT- Set 1



Trade that Trash!

4.3.C – 4.3.D – Comp FR with Diff Num & Den – TTT- Set 1



Trade that Trash!

4.3.C – 4.3.D – Comp FR with Diff Num & Den – TTT- Set 1