

Rules for Pest

Object of the game: Build a “hand” of cards that scores the most points.

Materials: Deck of “Pest” cards, well-shuffled, score cards, dry erase pens & erasers

To play: Take turns drawing from the pile and answering the questions. If you get the question correct, you keep the card. If you get it wrong, the card goes back to the bottom of the stack.

If you get a “Free” card, you can keep it or trade it with another person who has something you need. The other person has to agree to the trade.

To win: At the end of the game (when time is up or all cards are gone) , add up points according to the score card. Player with the most points wins.

NOTE: Scholars are allowed to use the conversion chart on the STAAR Test

Scoring:

- 3 points for each 4 of a kind
- 2 points for each 3 of a kind
- 1 point for each 2 of a kind
- 0 points for single cards

Printing: Landscape, grayscale, 2-sided, flip on short side, laminate score cards to use dry erase.

Unit: 5th – Measurement & Data Analysis**Lesson: 5.7.A – Measurement: Customary Conversions****PEST****Tip:** Bigger → Smaller = Multiply; Smaller → Bigger = Divide

1 3 miles X 1,760 yards per mile = 5,280 yards	2 29 ft X 12 ins per ft = 348 ins	3 56 fl ozs ÷ 8 ozs per cup = 7 cups	4 210 ft ÷ 3 ft per yrd = 70 yrds	5 5 tons X 2,000 lbs per ton = 10,000 lbs	6 64 pts ÷ 2 pts per qt = 32 qts 32 Qts ÷ 4 qts per gal = 8 gals
7 125 yds X 3 ft per yrd = 375 feet	8 240 ins ÷ 12 in per ft = 20 ft	9 80 gals X 4 qts per gal = 320 qts	10 66 pts ÷ 2 pts per qt = 33 qts	11 5 lbs X 16 ozs per lb = 80 ozs	12 72 cups ÷ 2 cups per pt = 36 pts 36 pts ÷ 2 pts per qt = 18 qts
13 5 yrds X 3 ft per yrd = 15 ft 15 ft X 12 in per ft = 180 ins	14 150 pts X 2 cups per pt = 300 cups	15 10 tons X 2,000 lbs per ton = 20,000 lbs	16 84 ins ÷ 12 in per ft = 7 ft	17 32 qts ÷ 4 qts per gal = 8 gals	18 80 pts ÷ 2 pts per qt = 40 qts
19 11 ft X 12 ins per ft = 132 ins	20 6 yrds X 3 ft per yrd = 18 ft 18 ft X 12 ins per ft = 216 ins	21 24 fl ozs ÷ 8 ozs per cup = 3 cups	22 160 fl ozs ÷ 8 ozs per cup = 20 cups 20 cups ÷ 2 cups per pt = 10 pts	23 99 ft ÷ 3 ft per yrd = 33 yds	24 200 yrds X 3 ft per yrd = 600 ft
25 28 cups ÷ 2 cups per pt = 14 pts 14 pts ÷ 2 pts per qt = 7 qts	26 32 pts ÷ 2 pts per qt = 16 qts 16 qts ÷ 4 qts per gal = 4 gals	27 15 gals X 4 qts per gal = 60 qts	28 100 yds X 3 ft per yrd = 300 ft 300ft X 12 in per ft = 3,600 ins	29 2 miles X 1,760 yrds per mile = 3,520 yrds	30 27 ft ÷ 3 ft per yrd = 9 yrds

STAAR GRADE 5 MATHEMATICS REFERENCE MATERIALS

LENGTH

Customary

1 mile (mi) = 1,760 yards (yd)

1 yard (yd) = 3 feet (ft)

1 foot (ft) = 12 inches (in.)

Metric

1 kilometer (km) = 1,000 meters (m)

1 meter (m) = 100 centimeters (cm)

1 centimeter (cm) = 10 millimeters (mm)

VOLUME AND CAPACITY

Customary

1 gallon (gal) = 4 quarts (qt)

1 quart (qt) = 2 pints (pt)

1 pint (pt) = 2 cups (c)

1 cup (c) = 8 fluid ounces (fl oz)

Metric

1 liter (L) = 1,000 milliliters (mL)

WEIGHT AND MASS

Customary

1 ton (T) = 2,000 pounds (lb)

1 pound (lb) = 16 ounces (oz)

Metric

1 kilogram (kg) = 1,000 grams (g)

1 gram (g) = 1,000 milligrams (mg)

Scorecard

_____ - 4 of a kind X 3 points = _____

_____ - 3 of a kind X 2 points = _____

_____ - 2 of a kind X 1 points = _____

Total points = _____

Scorecard

_____ - 4 of a kind X 3 points = _____

_____ - 3 of a kind X 2 points = _____

_____ - 2 of a kind X 1 points = _____

Total points = _____

Scorecard

_____ - 4 of a kind X 3 points = _____

_____ - 3 of a kind X 2 points = _____

_____ - 2 of a kind X 1 points = _____

Total points = _____

Scorecard

_____ - 4 of a kind X 3 points = _____

_____ - 3 of a kind X 2 points = _____

_____ - 2 of a kind X 1 points = _____

Total points = _____

1. Convert 3 miles to yards.

2. Convert 29 feet to inches.

3. Convert 56 fluid ounces to cups.

5.7.A – Measurement: Customary Conversions – Pest

5.7.A – Measurement: Customary Conversions – Pest

5.7.A – Measurement: Customary Conversions – Pest

4. Convert 210 feet to yards.

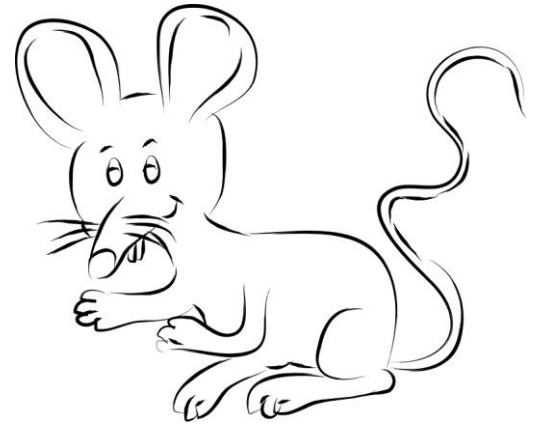
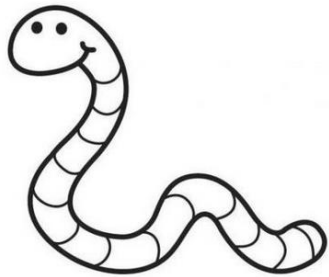
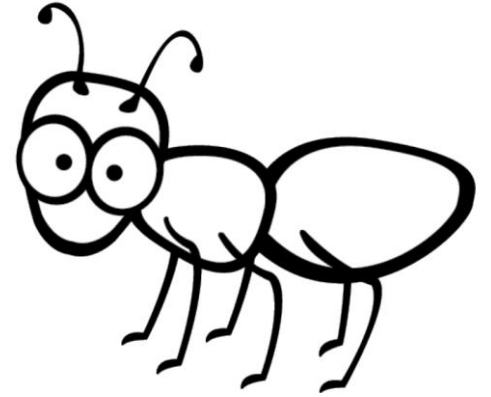
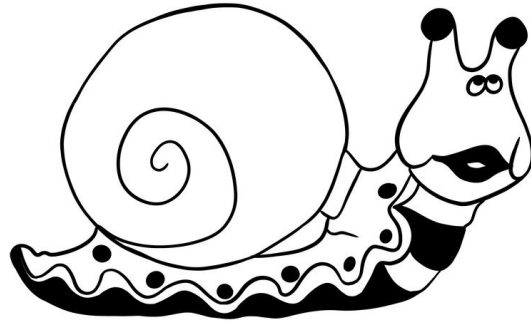
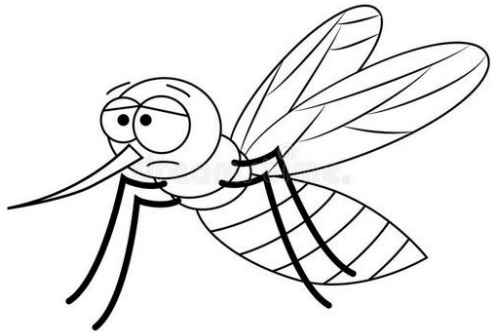
5. Convert 5 tons to pounds.

6. Convert 64 pints to gallons.

5.7.A – Measurement: Customary Conversions – Pest

5.7.A – Measurement: Customary Conversions – Pest

5.7.A – Measurement: Customary Conversions – Pest



7. Convert 125 yards to feet.

8. Convert 240 inches to feet.

9. Convert 80 gallons to quarts.

5.7.A – Measurement: Customary Conversions – Pest

5.7.A – Measurement: Customary Conversions – Pest

5.7.A – Measurement: Customary Conversions – Pest

10. Convert 66 pints to quarts.

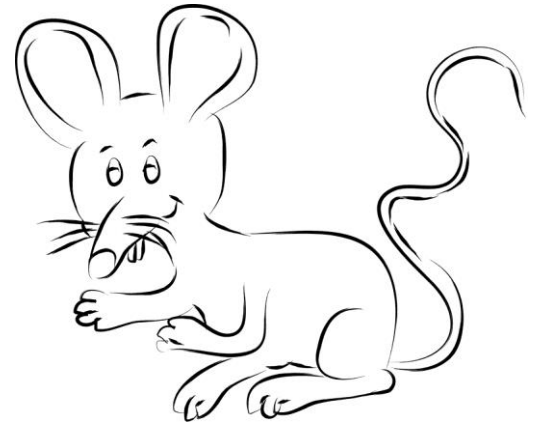
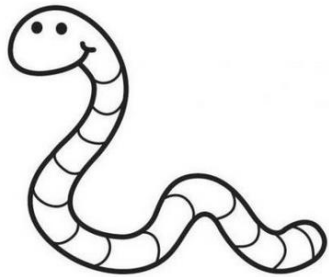
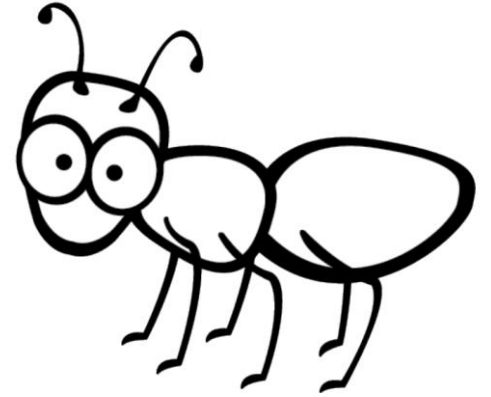
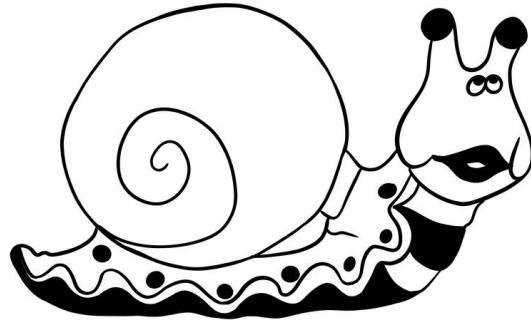
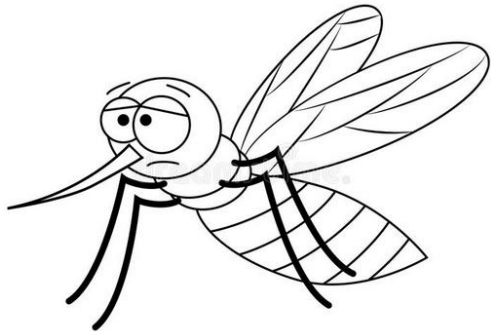
11. Convert 5 pounds to ounces.

12. Convert 72 cups to quarts.

5.7.A – Measurement: Customary Conversions – Pest

5.7.A – Measurement: Customary Conversions – Pest

5.7.A – Measurement: Customary Conversions – Pest



13. Convert 5 yards to inches.

14. Convert 150 pints to cups.

15. Convert 10 tons to pounds.

5.7.A – Measurement: Customary Conversions – Pest

5.7.A – Measurement: Customary Conversions – Pest

5.7.A – Measurement: Customary Conversions – Pest

16. Convert 84 inches to feet.

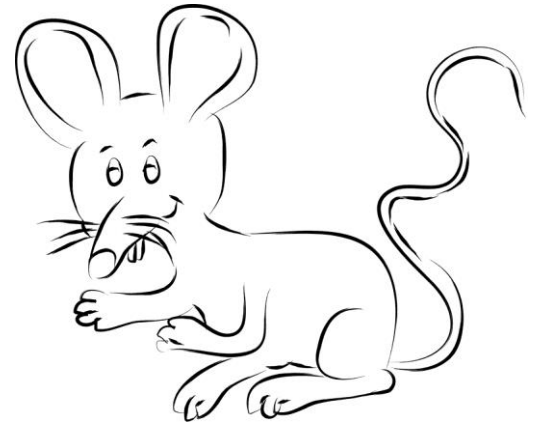
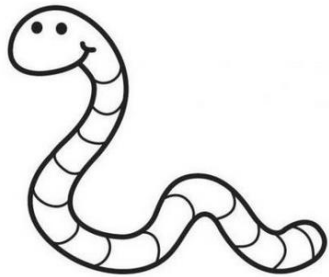
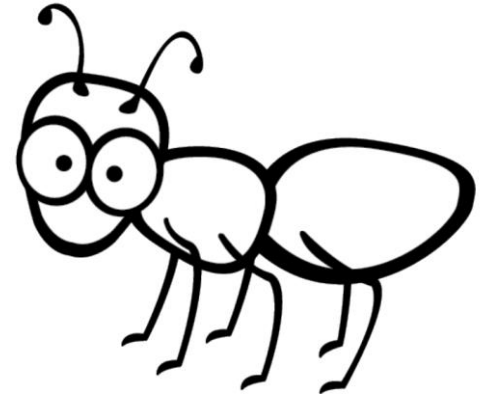
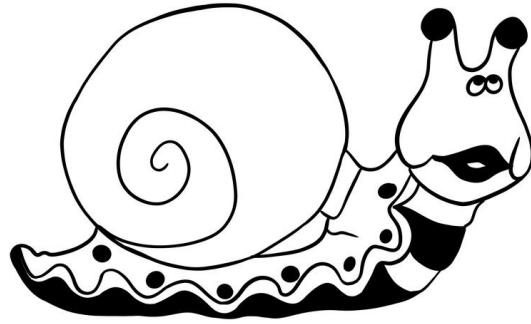
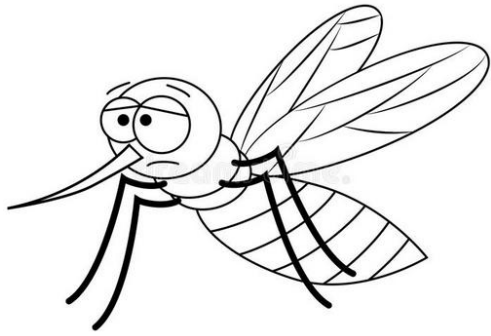
17. Convert 32 quarts to gallons.

18. Convert 80 pints to quarts.

5.7.A – Measurement: Customary Conversions – Pest

5.7.A – Measurement: Customary Conversions – Pest

5.7.A – Measurement: Customary Conversions – Pest



19. Convert 11 feet to inches.

5.7.A – Measurement: Customary Conversions – Pest

20. Convert 6 yards to inches.

5.7.A – Measurement: Customary Conversions – Pest

21. Convert 24 fluid ounces to cups.

5.7.A – Measurement: Customary Conversions – Pest

22. Convert 160 fluid ounces to pints.

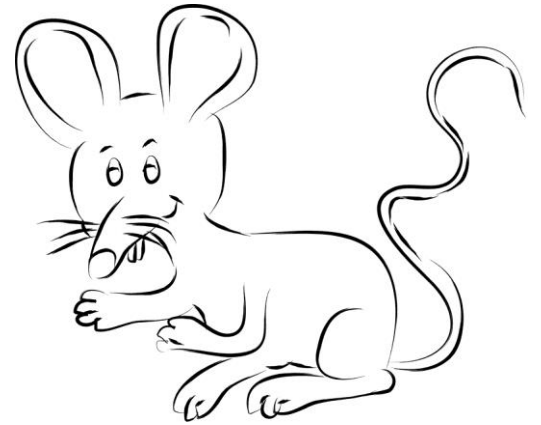
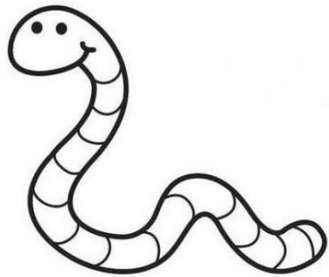
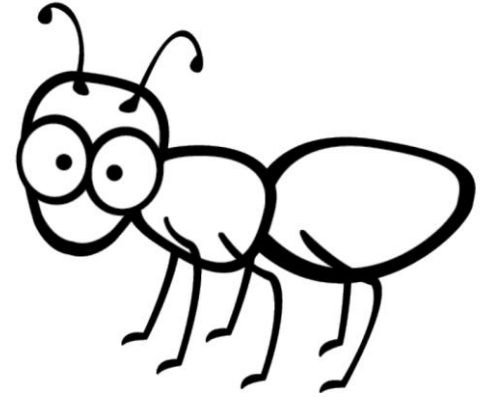
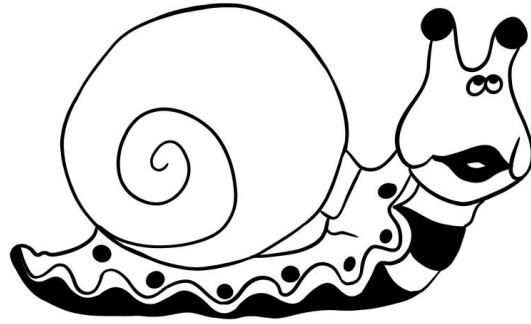
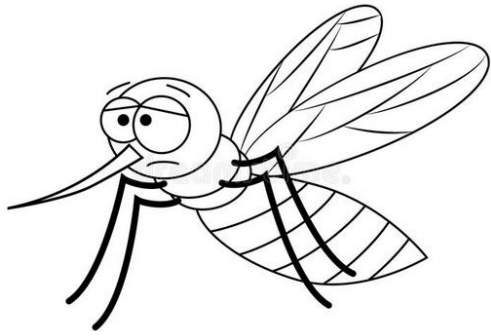
5.7.A – Measurement: Customary Conversions – Pest

23. Convert 99 feet to yards.

5.7.A – Measurement: Customary Conversions – Pest

24. Convert 200 yards to feet.

5.7.A – Measurement: Customary Conversions – Pest



25. Convert 28 cups to quarts.

26. Convert 32 pints to gallons.

27. Convert 15 gallons to quarts.

5.7.A – Measurement: Customary Conversions – Pest

5.7.A – Measurement: Customary Conversions – Pest

5.7.A – Measurement: Customary Conversions – Pest

28. Convert 100 yards to inches.

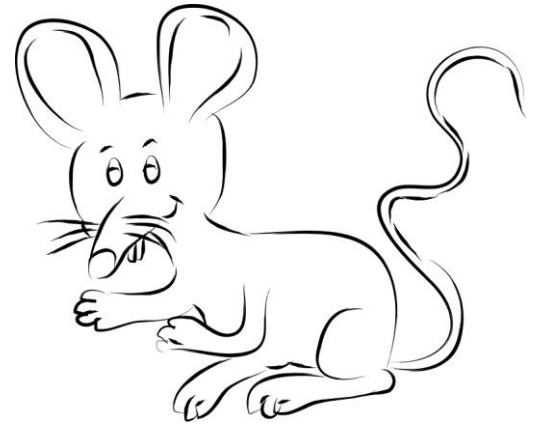
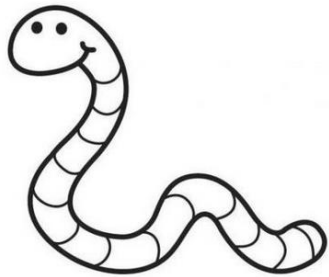
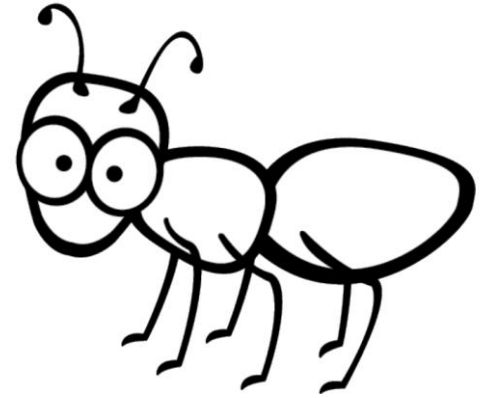
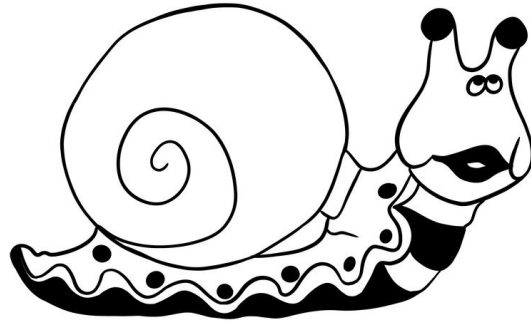
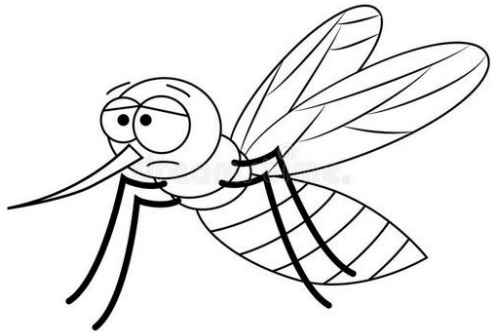
29. Convert 2 miles to yards.

30. Convert 27 feet to yards.

5.7.A – Measurement: Customary Conversions – Pest

5.7.A – Measurement: Customary Conversions – Pest

5.7.A – Measurement: Customary Conversions – Pest



Free Ant!

You can keep this free ant or trade it for another pest with someone who wants an ant.

Free snail!

You can keep this free snail or trade it for another pest with someone who wants a snail.

Free mosquito!

You can keep this free mosquito or trade it for another pest with someone who wants a mosquito.

5.7.A – Measurement: Customary Conversions – Pest

5.7.A – Measurement: Customary Conversions – Pest

5.7.A – Measurement: Customary Conversions – Pest

Free Rat!

You can keep this free rat or trade it for another pest with someone who wants a rat.

Free bat!

You can keep this free bat or trade it for another pest with someone who wants a Bat.

Free worm!

You can keep this free worm or trade it for another pest with someone who wants a worm.

5.7.A – Measurement: Customary Conversions – Pest

5.7.A – Measurement: Customary Conversions – Pest

5.7.A – Measurement: Customary Conversions – Pest

