

# Pay up!

## Materials needed:

- Game Pieces – one for each player
- Pay up game board
- Pay up cards
- Lots of Beans (flat glass marbles, actual beans, or other counters)
- Optional - Egg cartons cut down to 10 eggs (nice to have for collecting beans)

**To win:** Have the most beans at the end of the game.

## To play:

This game is VERY LOOSELY based on the game of Monopoly.

Everyone gets 5 beans to start. The rest of the beans are in the “Bank.”

Everyone puts his/her game piece on a property on the game board. There can be more than one piece per property.

Player 1 draws a card and answers it.

- If the player gets it correct, they get one bean from the bank and one bean for any player that is on the property indicated. (If the player gets it wrong, they do not collect any beans.)
- If the player draws a “Pay up!” card they must PAY one bean to the bank and one bean to any players on the properties indicated.

Continue around the table drawing cards and paying or taking beans.

Throughout the game, players may move their game pieces to a different property when it is their turn but must do so before they draw their card.

## To Win

Game ends when time is up, or any player runs out of beans. Player with the most beans at the end of the game wins. Or you can play to a certain number of beans (e.g. first player to get 30 beans wins).

**Printing:** Print 1-sided. Be sure to select “Actual Size” when printing from a PDF so that measurements are correct.

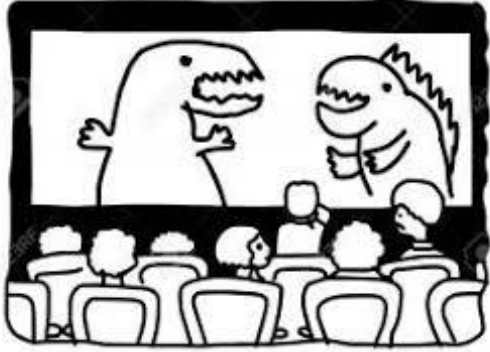
**Unit: 4<sup>th</sup> – Measurement & Data Analysis**  
**4.8.A – 4.8.B – 4.8.C – Measuring Length, Width & Volume**

**Pay UP**

*Note: Some parts of these materials are taken directly from released STAAR tests Copyright © 2015-2021. Texas Education Agency. All Rights Reserved. Used by Permission.*

<b>1</b>  A	<b>2</b>  C	<b>3</b>  B	<b>4</b>  D	<b>5</b>  C	<b>6</b>  C
<b>7</b>  B	<b>8</b>  C	<b>9</b>  D	<b>10</b>  C	<b>11</b>  B	<b>12</b>  B
<b>13</b>  C	<b>14</b>  B	<b>15</b>  C	<b>16</b>  B	<b>17</b>  B	<b>18</b>  C
<b>19</b>  A	<b>20</b>  246	<b>21</b>  D	<b>22</b>  B	<b>23</b>  A	<b>24</b>  B
<b>25</b>  C	<b>26</b>  204	<b>27</b>  D	<b>28</b>  C	<b>29</b>  B	<b>30</b>  C

# The Movies



# The Mini-Golf Course



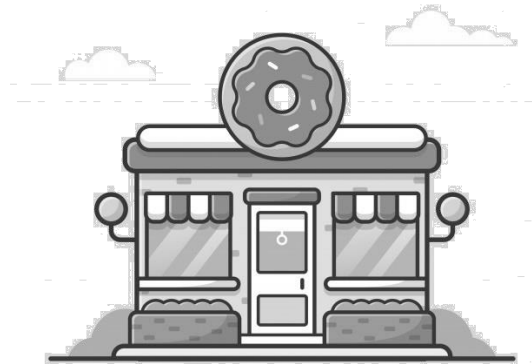
# The Ice Cream Store



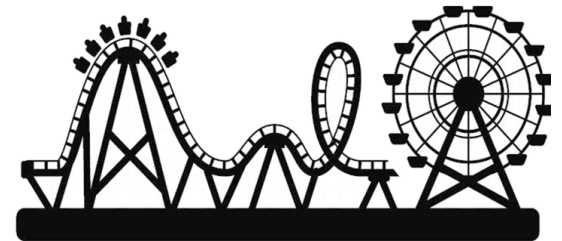
# The Mall



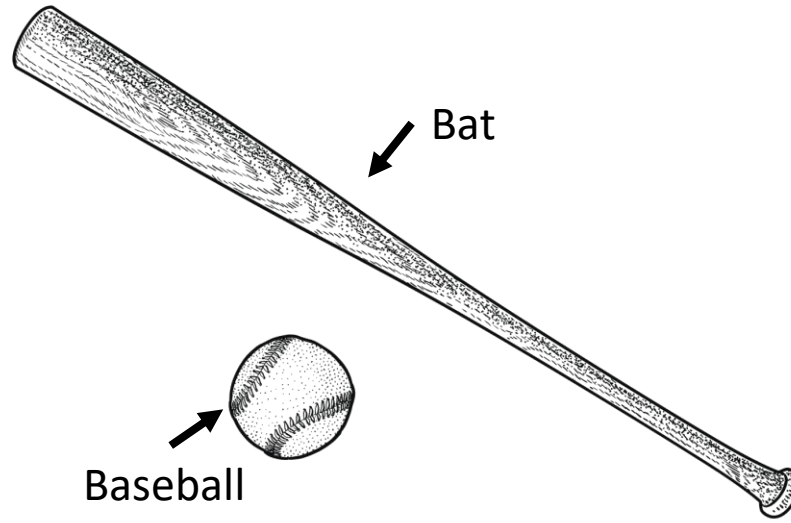
# The Donut Hut



# The Fair

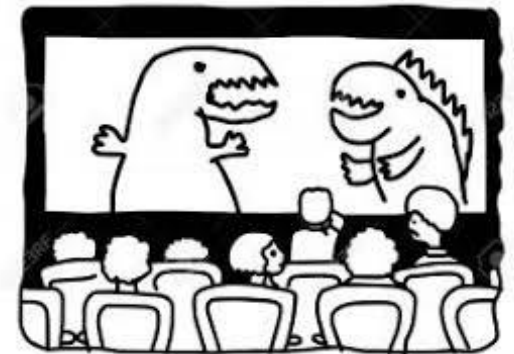


1. Garrett has a baseball and a bat like the ones shown in the picture.



Which measurement best describes the length of the bat?

- A. 35 in
- B. 35 m
- C. 35 ft
- D. 35 mm



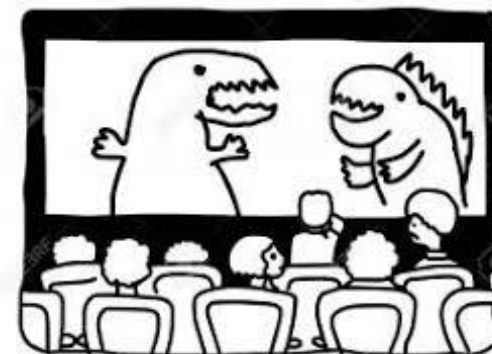
2. The table shows numbers of feet and the equivalent numbers of yards.

Feet-to-Yards Conversions

Number of Feet	Number of Yards
12	4
15	5
18	6
21	7

Nathan has a piece of chain that is 54 feet long. How many yards of chain does Nathan have?

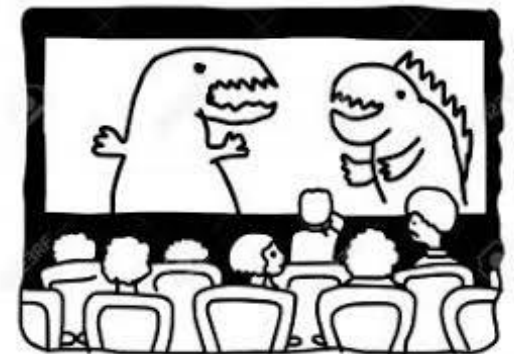
- A. 22 yd
- B. 162 yd
- C. 18 yd
- D. 46 yd



3. Olivia has 2 gallons and 3 quarts of vanilla ice cream and 1 gallon and 2 quarts of chocolate ice cream left over from a party.

What is the total number of gallons and quarts of ice cream that Olivia has left over?

- A. 1 gal 1 qt
- B. 4 gal 1 qt
- C. 5 gal 3 qt
- D. 5 gal 1 qt

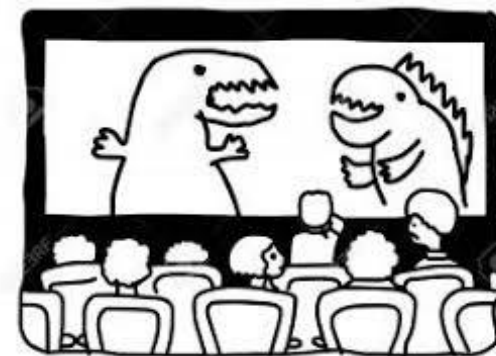


4. Armando has two pencils in his desk. Use the ruler to measure the length of each pencil to the nearest centimeter.

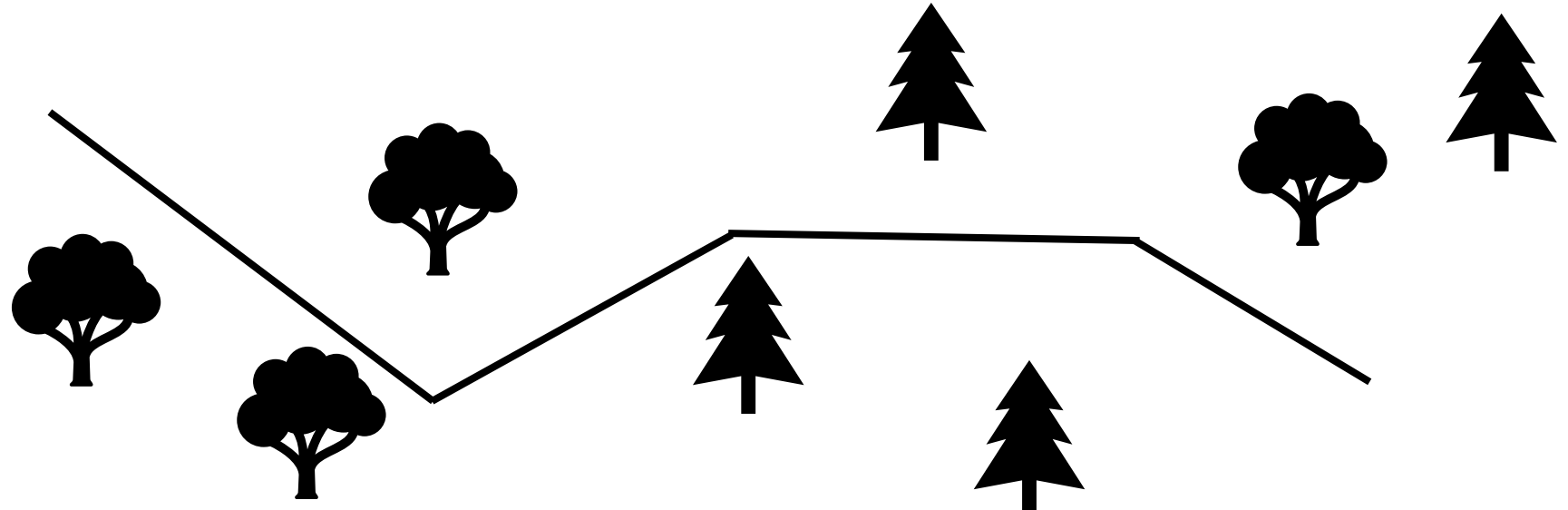


Which measurement is closest to the difference in centimeters between the lengths of these two pencils?

- A. 9 cm
- B. 1 cm
- C. 23 cm
- D. 3 cm

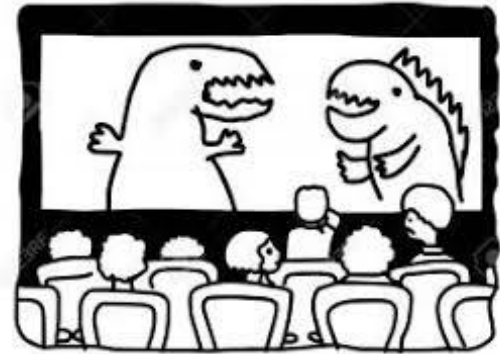


5. In the diagram below, the line segments represent four parts of a walking trail in a park. Use the ruler provided to measure the length of each line segment to the nearest centimeter.



Which measurement is closest to the total length in centimeters of the walking trail shown in the diagram?

- A. 9 cm
- B. 26 cm
- C. 22 cm
- D. 18 cm





6. Tyra opened a new bag of birdseed and filled 3 bird feeders. She put 2,500 grams of birdseed into each feeder. There were 1,500 grams of birdseed left in the bag. What was the mass of the bag of birdseed in kilograms before Tyra opened it?

- A. 4 kg
- B. 4,000 kg
- C. 9 kg
- D. 9,000 kg



7. A dictionary has a mass of about 2.5 kg Which object has a mass closest to the mass of a dictionary?

- A. Bicycle
- B. Pair of boots
- C. Refrigerator
- D. Bag of chips



8. The table shows numbers of feet and the equivalent numbers of yards.

Equivalent distances

Number of Yards	Number of Feet
5	15
15	45
25	75
35	105

Joey walked 333 feet. How many yards did Joey walk?

- A. 999 yd
- B. 363 yd
- C. 111 yd
- D. 193 yd



9. A customer bought almonds and walnuts at a grocery store.

- The customer bought 1 pound 15 ounces of almonds.
- The customer also bought 3 pounds 4 ounces of walnuts.

What is the total amount of almonds and walnuts that the customer bought in pounds and ounces?

- A. 4 lb 3 oz
- B. 5 lb 9 oz
- C. 4 lb 11 oz
- D. 5 lb 3 oz

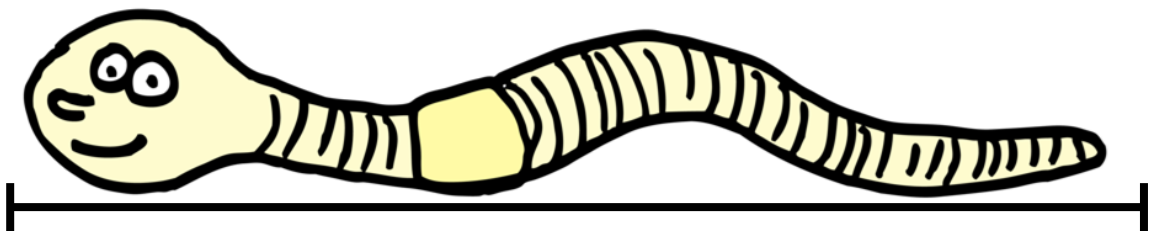


10. Miranda had 2 pounds and 10 ozs of cheese on one cheese tray and 1 pound and 7 ounces on another cheese tray. She decided to combine all the cheese onto one tray. How much cheese would that be in pounds and ounces?

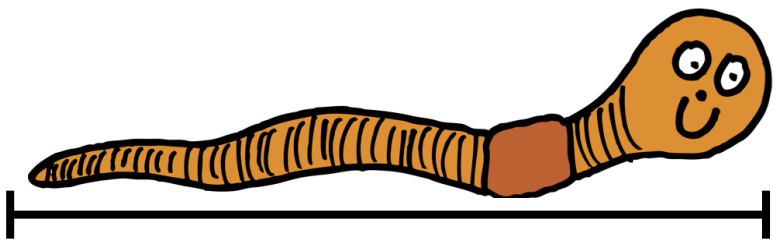
- A. 3 lbs 10 oz
- B. 3 lbs 1 oz
- C. 4 lbs 1 oz
- D. 4 lbs 5 oz



11. Ernestine earthworm is a little longer than Ernie earthworm. Use the ruler provided to measure both earthworms.



Ernestine



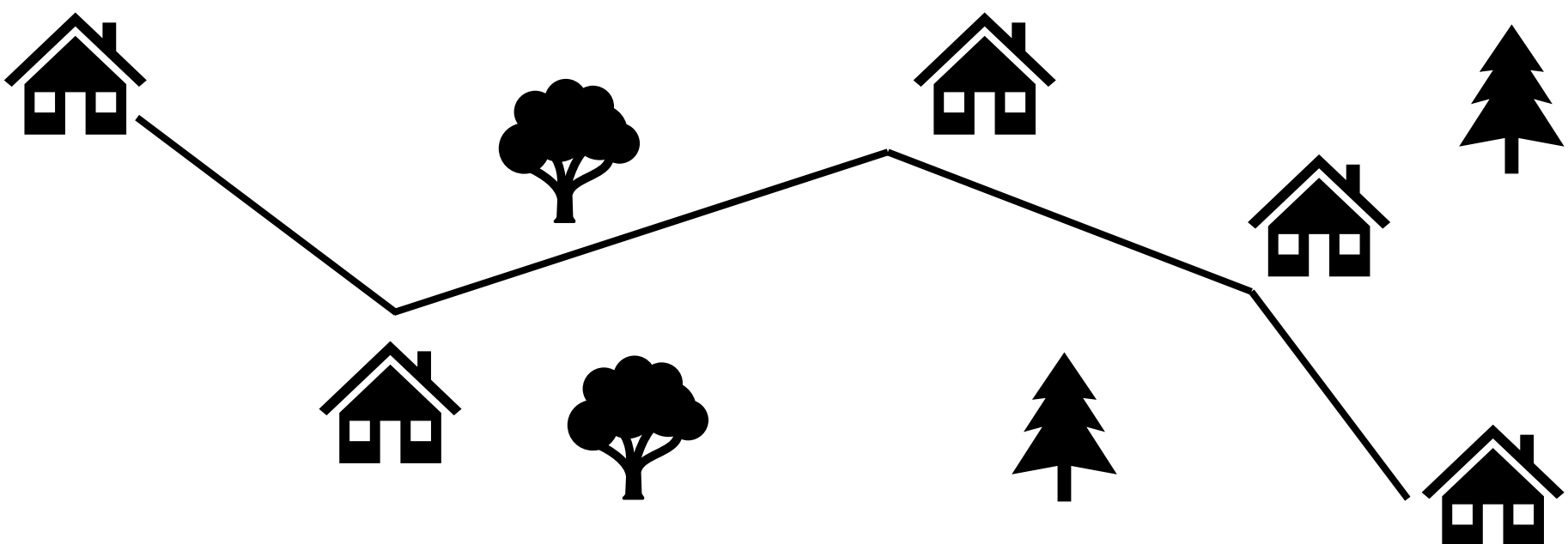
Ernie

Which measurement is closest to the difference in centimeters between the lengths of these two earthworms?

- A. 9 cm
- B. 5 cm
- C. 2 cm
- D. 7 cm



12. In the diagram below, the line segments represent the path Deion used to visit some of his friends. Use the ruler provided to measure the length of each line segment to the nearest centimeter.

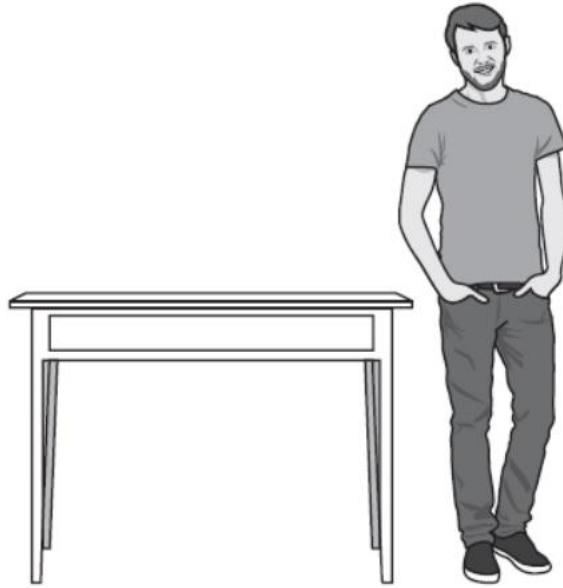


Which measurement is closest to the total length in centimeters of the path shown in the diagram?

- A. 11 cm
- B. 23 cm
- C. 26 cm
- D. 18 cm



13. A man is standing next to a table



Which measurement best describes the height of the table?

- A. 3 meters
- B. 3 centimeters
- C. 3 feet
- D. 3 inches





14. The table shows numbers of gallons and the equivalent numbers of quarts.

Equivalent Volumes

Number of Gallons	Number of Quarts
5	20
15	60
25	100
35	140

Martina’s bathtub holds 40 gallons of water. How many quarts would that be?

- A. 80 quarts
- B. 160 quarts
- C. 240 quarts
- D. 320 quarts



15. Polly the panda trainer opened a new bag of panda treats. She gave 3,000 grams of treats to Percy Panda. She gave 1,500 grams of treats to Pamela Panda, and she gave 1,500 grams of treats to Pablo Panda. She still had 2,000 grams of treats left in the bag. Which of these was the weight of the bag of panda treats before Polly opened it?

- A. 5.5 kg
- B. 5,500 kg
- C. 8 kg
- D. 800 kg



16. A customer bought apples and oranges at a grocery store.

- The customer bought 5 pound 12 ounces of apples
- The customer also bought 8 pounds 10 ounces of oranges

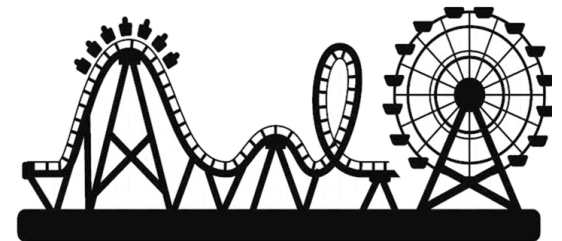
What is the total amount of apples and oranges that the customer bought in pounds and ounces?

- A. 13 lb 6 oz
- B. 14 lbs 6 oz
- C. 13 lb 2 oz
- D. 14 lb 14 oz



17. Jazmine has 1 cup and 6 fluid ounces of orange juice and 2 cups and 4 fluid ounces of pineapple juice. She decides to combine them and make pineapple-orange juice. What is the total number of cups and fluid ounces of pineapple-orange juice Jazmine will have?

- A. 3 cups and 2 fluid ounces
- B. 4 cups and 2 fluid ounces
- C. 4 cups and 10 fluid ounces
- D. 3 cups and 4 fluid ounces

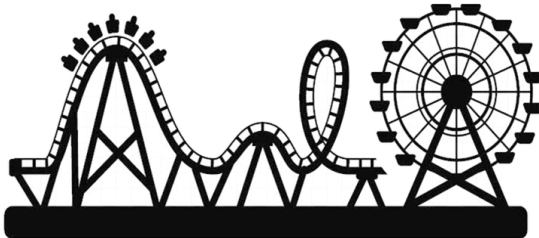


18. Ci'Riha has two pieces of string. She needs them to be the same length. Use the ruler provided to measure the pieces of string.



Which measurement is closest to the amount Ci' Riha will have to cut off the long string to make it the same length as the short string?

- A. 9 cm
- B. 5 cm
- C. 8 cm
- D. 3 cm



19. Rodney Raccoon weighs 10 kilograms. Which object weighs about the same as Rodney?

- A. A vacuum cleaner
- B. A car
- C. A box of toothpicks
- D. A can of soda



20. The distance from the door of Ms. Kelleher's classroom to the door of the Girl's Restroom is 82 yards. How far is that in feet?



21. Raymond is planning a big BBQ.

- He bought one package of ribs that weighed 5 pounds and 10 ozs
- He bought another package of ribs that weighed 3 pounds and 12 ozs

What is the total amount of Ribs that Raymond bought in pounds and ounces?

- A. 8 lb 8 oz
- B. 8 lb 6 oz
- C. 9 lb 12 oz
- D. 9 lb 6 oz





22. Erin has 3 meters and 75 centimeters of blue yarn in one ball, and 8 meters and 50 centimeters of blue yarn in another ball. How much blue yarn does Erin have total in meters and centimeters?

- A. 11 meters, 25 centimeters
- B. 12 meters, 25 centimeters
- C. 11 meters, 50 centimeters
- D. 12 meters, 50 centimeters



23. The chart shows how many inches Sammy Snail crawled each day this week.

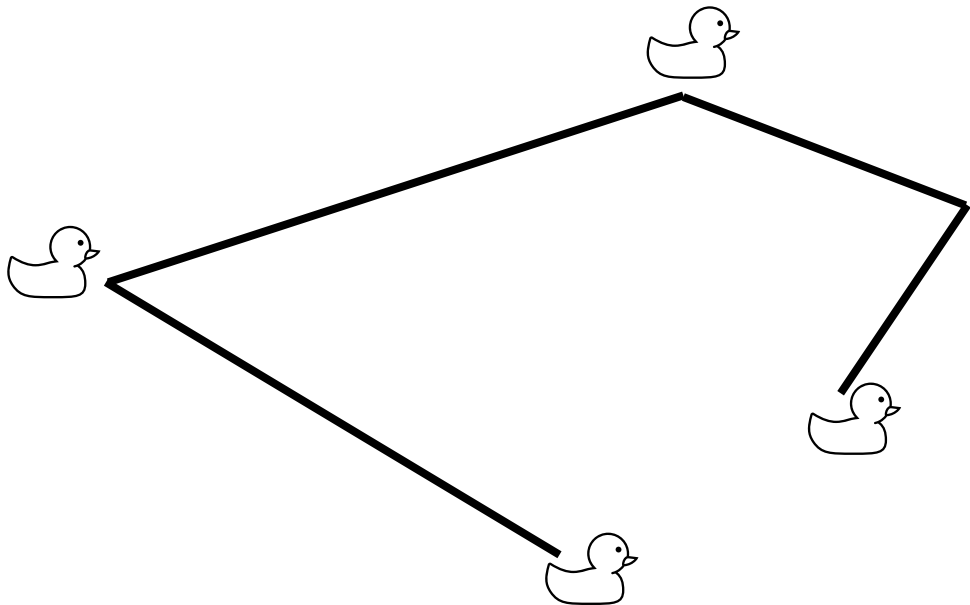
Monday	2 inches
Tuesday	4 inches
Wednesday	3 inches
Thursday	4 inches
Friday	4 inches
Saturday	3 inches
Sunday	2 inches

Which of these is the total distance Sammy crawled this week?

- A. 1 foot and 10 inches
- B. 2 feet and 4 inches
- C. 1 foot and 2 inches
- D. 2 feet exactly



24. In the diagram below, the line segments represent the path Dolores Duck Swam to check on her ducklings. Use the ruler provided to measure the length of each line segment to the nearest centimeter.



Which measurement is closest to the total length in centimeters of the path represented in the drawing?

- A. 11 cm
- B. 22 cm
- C. 26 cm
- D. 18 cm

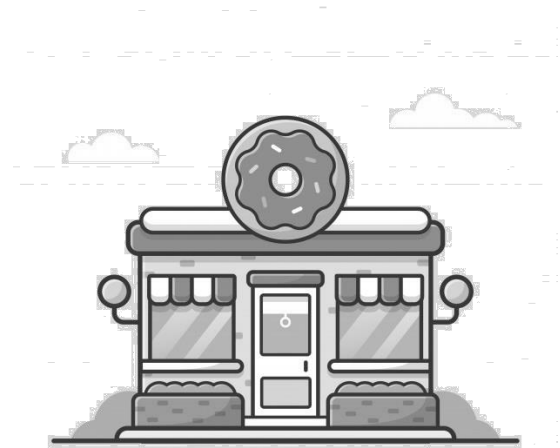


25. Josiah saw a rattlesnake at the zoo that was 1.5 meters long. What is something else that might measure about 1.5 meters?

- A. A fork
- B. A city block
- C. A seventh grade boy
- D. A pick up truck



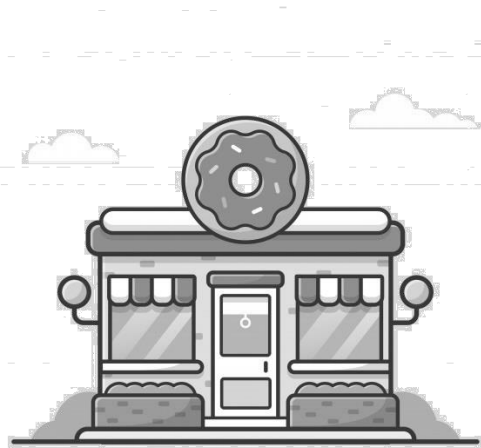
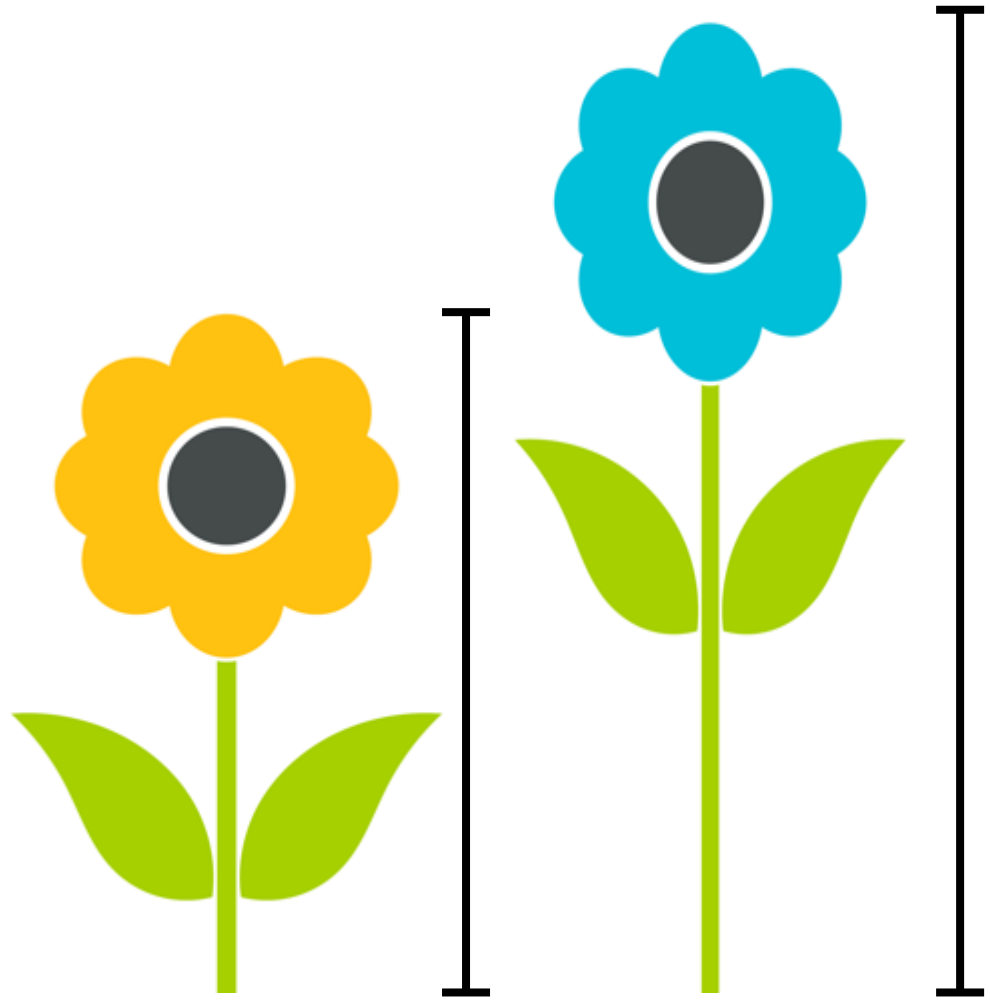
26. The distance from the edge of Daisja's desk to the door of Ms. Kelleher's classroom is 17 feet. How far is that in inches?



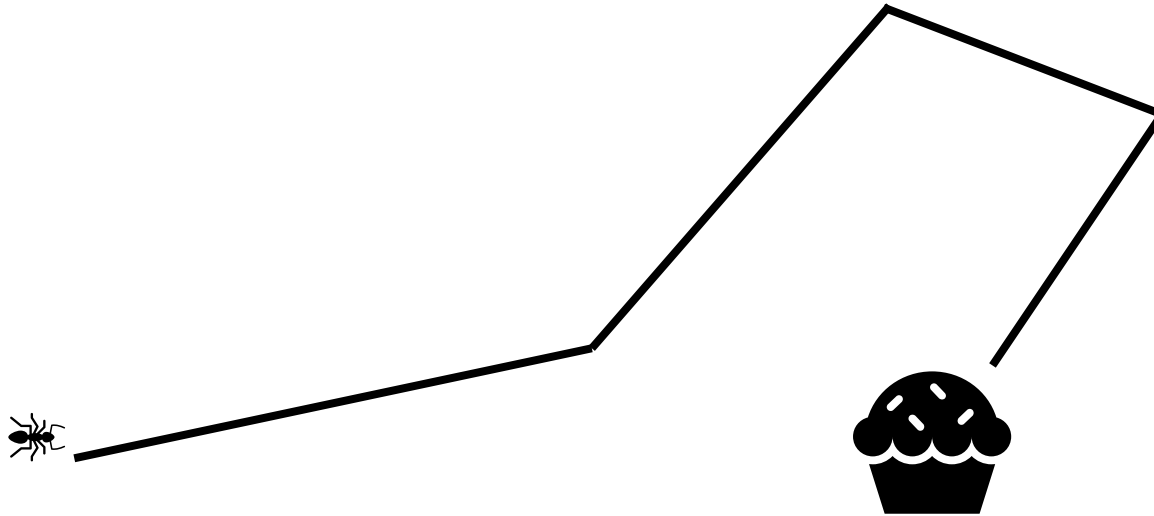
27. Archie has two flowers. He wants them to be the same height. Use the ruler to measure the height of each flower to the nearest centimeter.

Which measurement is closest to the amount Archie will have to trim the tall flower to make it the same height as the short flower?

- A. 6 cm
- B. 2 cm
- C. 13 cm
- D. 4 cm

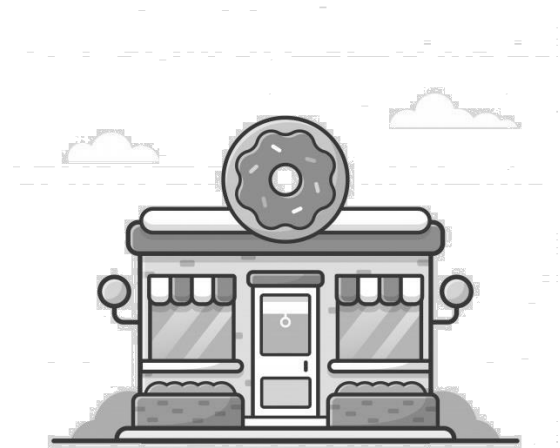


28. In the diagram below, the line segments represent four parts of the trail Anita Ant followed to find the cupcake. Use the ruler provided to measure the length of each line segment to the nearest centimeter.



Which measurement is closest to the total length in centimeters of the trail shown in the diagram?

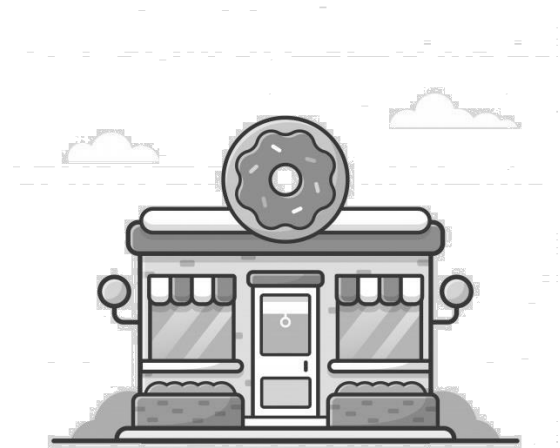
- A. 11 cm
- B. 23 cm
- C. 21 cm
- D. 18 cm



29. Phillip owns a restaurant. He bought a new jug of picante sauce. He used the new jug to fill 6 pitchers with 600 milliliters of picante sauce in each pitcher, and he still had 400 milliliters of picante sauce in the jug.

Which of these shows the amount of picante sauce that was in the jug when Phillip bought it?

- A. 3 liters and 600 milliliters
- B. 4 liters
- C. 40 liters
- D. 3 liters and 400 milliliters



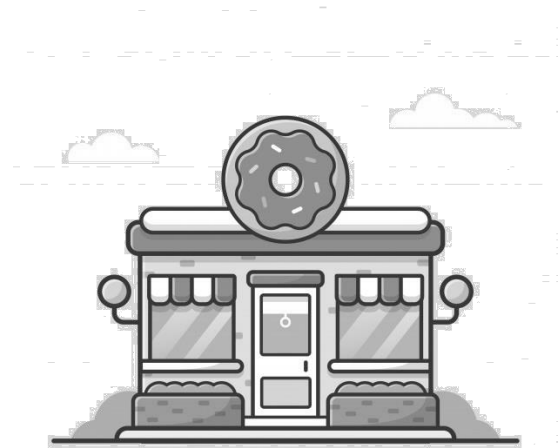


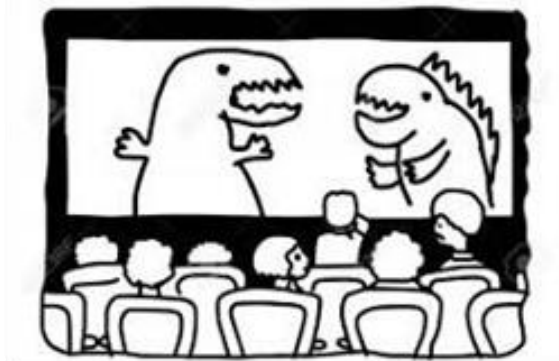
30. Jordan works at an upholstery shop. His supervisor asked him to figure out how much cloth they have left over from a recent upholstery job.

- They had 2 yards and 2 feet of checked cloth left over.
- They also had 3 yards and 2 feet of striped cloth left over.

How much leftover cloth is that all together?

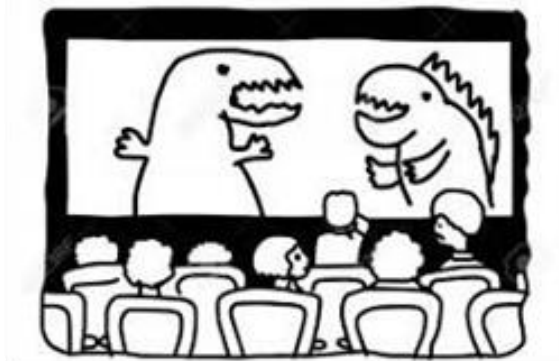
- A. Exactly 5 yards
- B. 5 yards and 1 foot
- C. 6 yards and 1 foot
- D. 6 yards and 2 feet





**PAY UP!!**





**PAY UP!!**





**PAY UP!!**



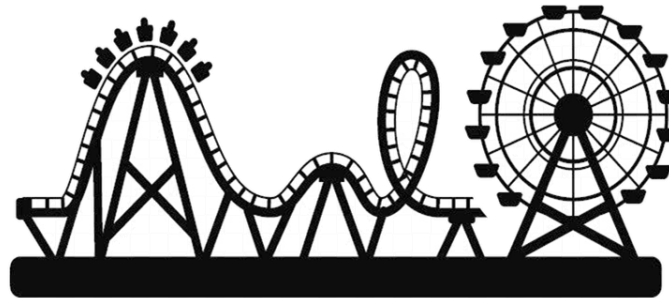


**PAY UP!!**



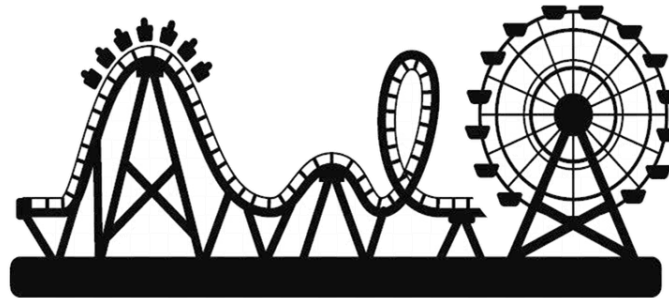


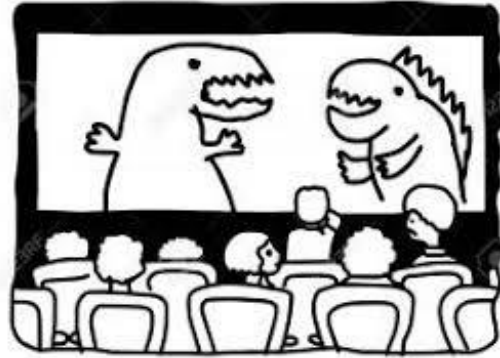
**PAY UP!!**





**PAY UP!!**





**PAY UP!!**







**PAY UP!!**



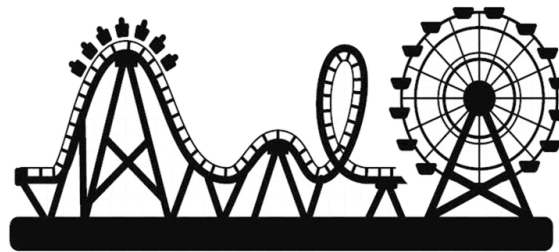


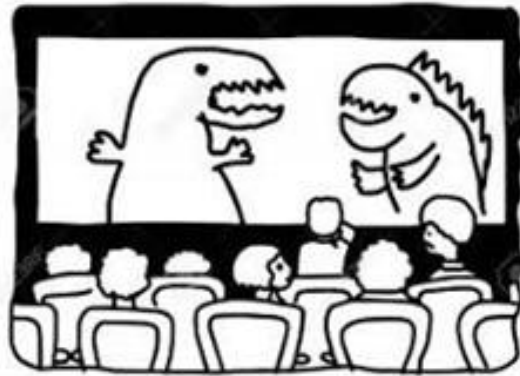
**PAY UP!!**





**PAY UP!!**





**PAY UP!!**





**PAY UP!!**

